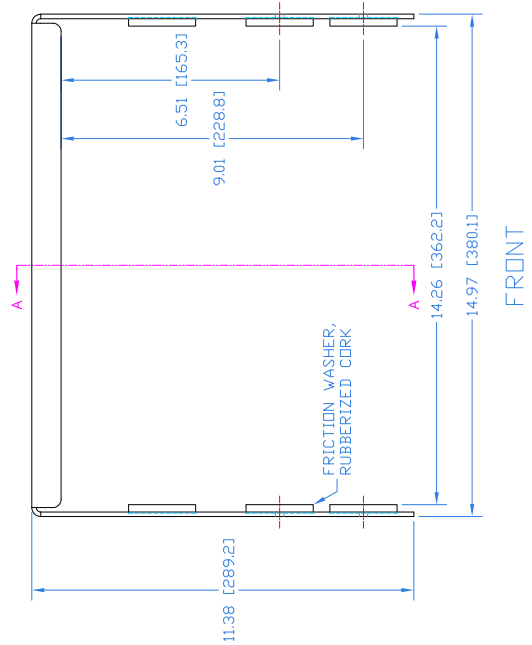
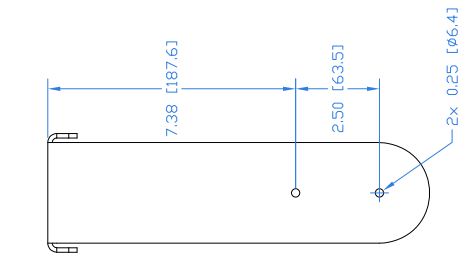
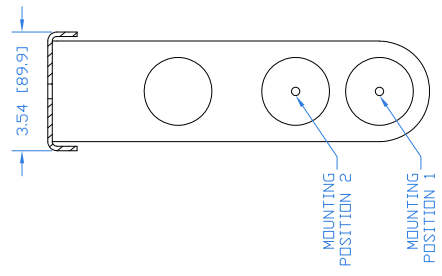
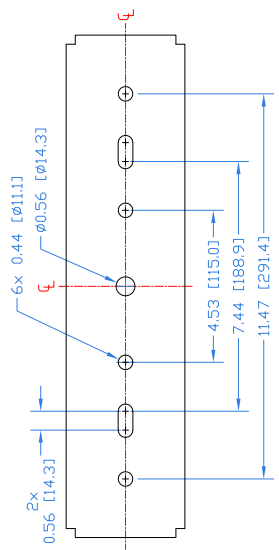


REVISIONS		
REV	DESCRIPTION	APPR / DATE
1	NEW ISSUE	01/12/21
2	ADD CCX8 REF TO NOTES	06/30/22

- Notes:
1. Fits: CX8 Series & CCX8 Series
  2. Net Weight: Approx. 5.4 lb / 2.5 kg
  3. Material: **10 GA ASTM A36 steel**
  4. Includes 2x each M6 socket head cap screws, split washers, and flat washers



THIRD ANGLE PROJECTION		STATUS		RELEASED	
<p>THIS DRAWING IS THE PROPERTY OF FULCRUM ACOUSTIC AND SHALL NOT BE COPIED, REPRODUCED OR USED AS THE BASIS FOR MANUFACTURE OR SALE OF APPARATUS WITHOUT WRITTEN AUTHORIZATION. DO NOT SCALE DRAWING.</p>		UNLESS OTHERWISE SPECIFIED: ALL DIMENSIONS ARE IN INCHES TOLERANCE IN INCHES .XX±0.05 .XXX±0.05 FRACTIONS ±1/32 ANGLES ±1/2°		APPROVALS DRAWN: RAF CHECKED: DES ENG: MFG ENG:	
		DATE 01/12/21		TITLE: YK-CX8 Yoke Bracket	
		SCALE: 1:1		SHEET 1 OF 1	
		DWG. NO. 820-300-028		REV 2	

FULCRUM ACOUSTIC, LLC  
 670 LINWOOD AVE., WHITINSVILLE, MA 01588 USA

Mechanical Spec,  
 YK-CX8 Yoke Bracket