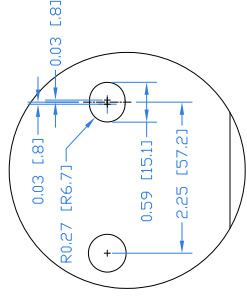
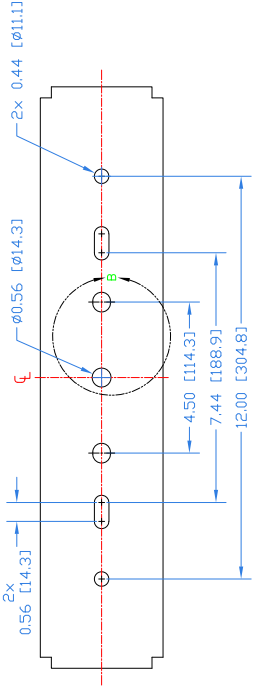


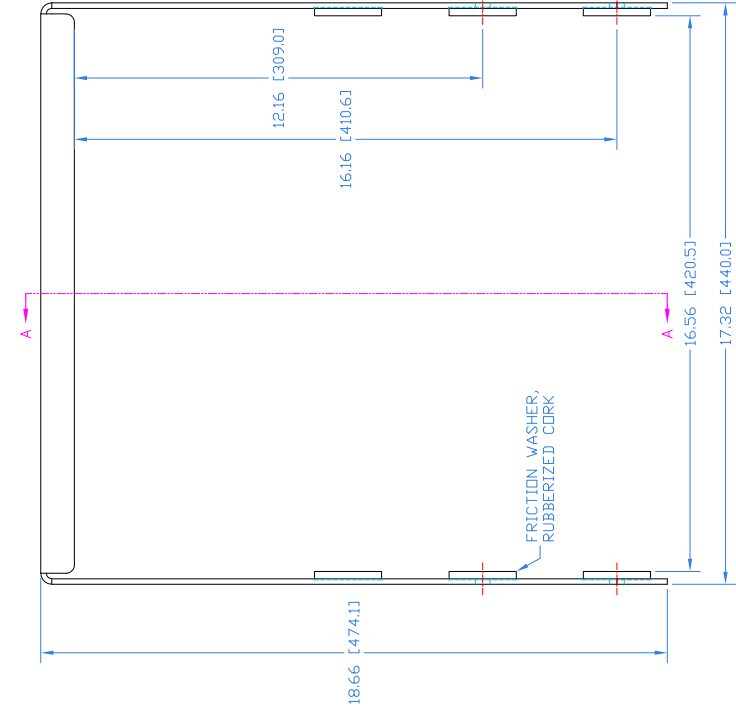
REVISIONS		APPR / DATE
REV	DESCRIPTION	
1	NEW ISSUE	01/28/21

Notes:

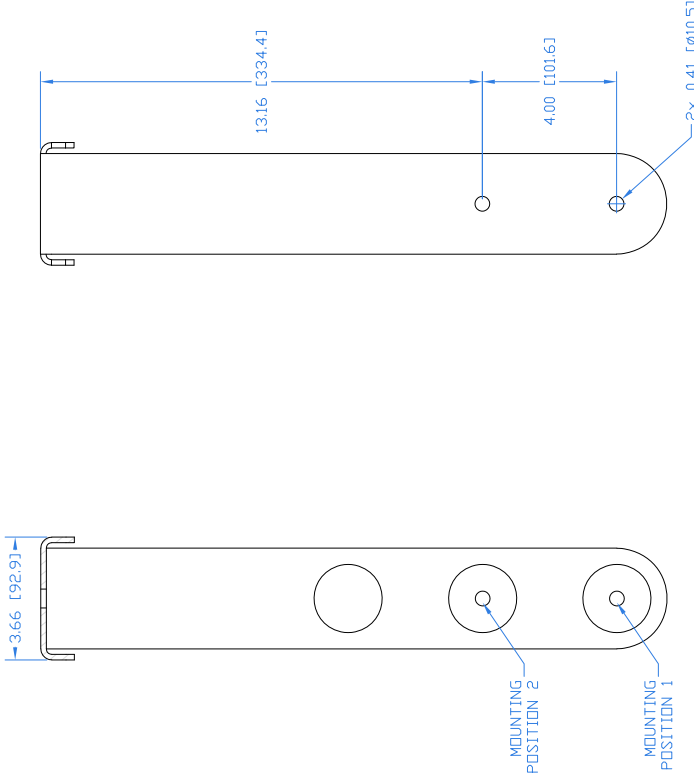
1. Fits: DF4 Series
2. Net Weight: Approx. 9.0 lb / 4.1 kg
3. Material: 8 GA ASTM A36 steel
4. Includes 2x each M10 socket head cap screws, split washers, and flat washers



TOP

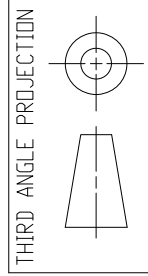


FRONT



RIGHT SIDE

SECTION A-A



THIS DRAWING IS THE PROPERTY OF FULCRUM ACOUSTIC AND SHALL NOT BE COPIED, REPRODUCED OR USED AS THE BASIS FOR MANUFACTURE OR SALE OF APPARATUS WITHOUT WRITTEN AUTHORIZATION. DO NOT SCALE DRAWING.

UNLESS OTHERWISE SPECIFIED:
ALL DIMENSIONS ARE IN INCHES
TOLERANCE IN INCHES
.X±.1 .XX±.015 .XXX±.005
FRACTIONS ±1/32
ANGLES ±1/2°
(X.XX) = REF DIMS NO TOLERANCE IMPLIED
TSC = THEORETICAL SHARP CORNER
DIMENSIONS ACROSS CENTERLINES
TO BE SYMMETRICAL

STATUS	RELEASED	DATE
APPROVALS	RAF	01/28/21
DRAWN:	DEW	01/28/21
CHECKED:		
DWG ENG:		
MFG ENG:		

FULCRUM ACOUSTIC, LLC
670 LINWOOD AVE. WHITINSVILLE, MA 01588 USA

TITLE: Mechanical Spec,
YK-DF4 Yoke Bracket

A SHEET 1 OF 1 SCALE: 1:6

DWG. NO. 820-300-047 REV 1