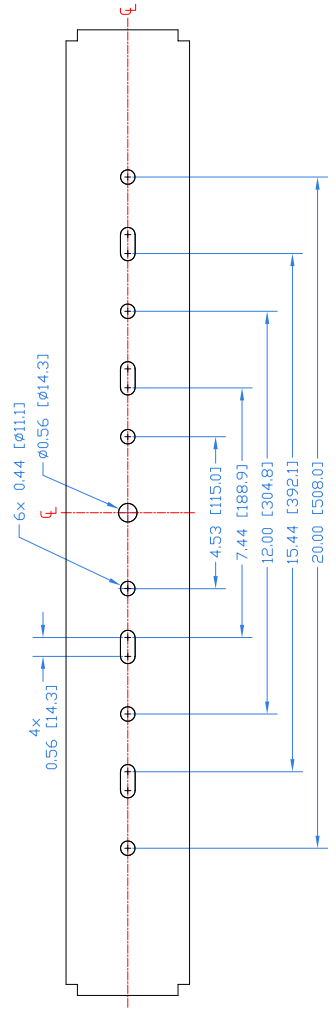


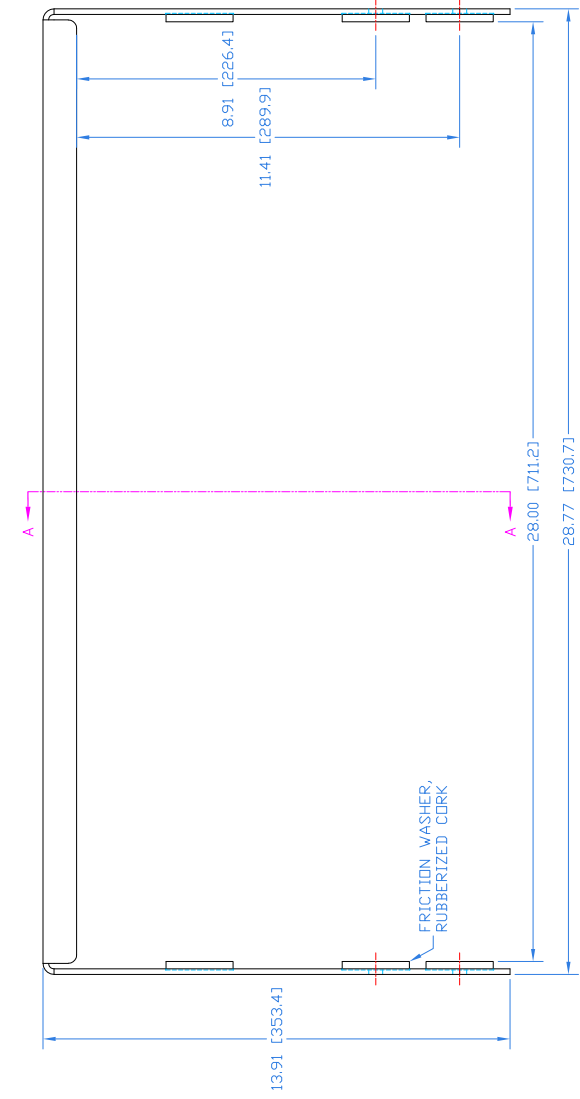
REVISIONS		
REV	DESCRIPTION	APPR / DATE
1	NEW ISSUE	01/19/21

Notes:

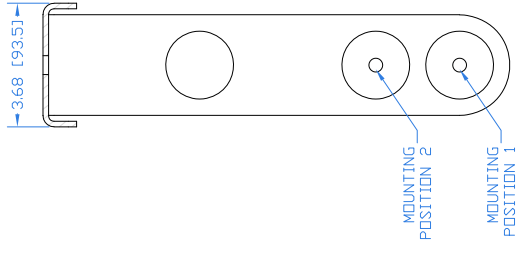
1. Fits: DX12 Series
2. Net Weight: Approx. 10.3 lb / 4.7 kg
3. Material: 8 GA ASTM A36 steel
4. Includes 2x each M10 socket head cap screws, split washers, and flat washers



TOP



FRONT



SECTION A-A

RIGHT SIDE

THIRD ANGLE PROJECTION

THIS DRAWING IS THE PROPERTY OF FULCRUM ACOUSTIC AND SHALL NOT BE COPIED, REPRODUCED OR USED AS THE BASIS FOR MANUFACTURE OR SALE OF APPARATUS WITHOUT WRITTEN AUTHORIZATION. DO NOT SCALE DRAWING.

UNLESS OTHERWISE SPECIFIED:
ALL DIMENSIONS ARE IN INCHES

TOLERANCE IN INCHES
.XX±.015 .XXX±.005
FRACTIONS ±1/32
ANGLES ±1/2°

(X.XX) = REF DIMS NO TOLERANCE IMPLIED

TSC = THEORETICAL SHARP CORNER

DIMENSIONS ACROSS CENTERLINES TO BE SYMMETRICAL

STATUS	RELEASED	DATE
APPROVALS	RAF	01/19/21
DRAWN:		
CHECKED:		
DWG ENG:		
MFG ENG:		

FULCRUM ACOUSTIC, LLC
670 LINDOOD AVE, WHITINSVILLE, MA 01888 USA

TITLE: Mechanical Spec,
YK-DX12 Yoke Bracket

A SHEET 1 OF 1 SCALE: 1:1

DWG. NO. 820-300-038 REV 1