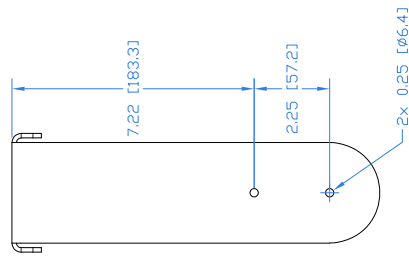
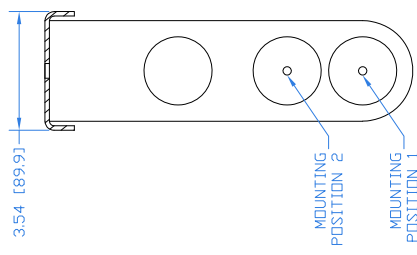
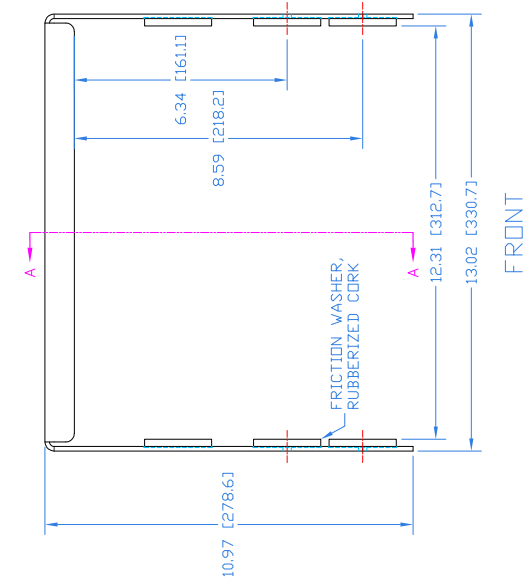
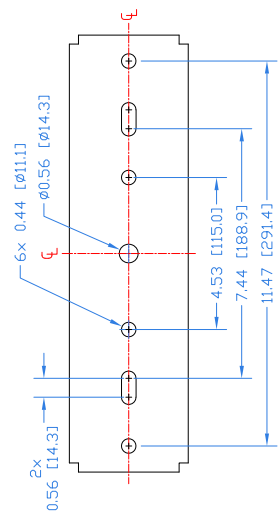


REVISIONS		
REV	DESCRIPTION	APPR / DATE
1	NEW ISSUE	06/23/20
2	UPDATE DIMS	12/15/20
3	UPDATE NOTES, ADD WASHERS	01/18/21

Notes:

1. Fits: Profile P
2. Net Weight: Approx. 5.3 lb / 2.4 kg
3. Material: 10 GA ASTM A36 steel
4. Includes 2x each M6 socket head cap screws, split washers, and flat washers



THIRD ANGLE PROJECTION

THIS DRAWING IS THE PROPERTY OF FULCRUM ACOUSTIC AND SHALL NOT BE COPIED, REPRODUCED, OR USED AS THE BASIS FOR MANUFACTURE OR SALE OF APPARATUS WITHOUT WRITTEN AUTHORIZATION. DO NOT SCALE DRAWING.

UNLESS OTHERWISE SPECIFIED:
ALL DIMENSIONS ARE IN INCHES

TOLERANCE IN INCHES
.XX±.015 .XXX±.005
FRACTIONS ±1/32
ANGLES ±1/2°

(X.XXX) = REF DIMS NO TOLERANCE IMPLIED

TSC = THEORETICAL SHARP CORNER
DIMENSIONS ACROSS CENTERLINES
TO BE SYMMETRICAL

STATUS		RELEASED
APPROVALS	DATE	
DRAWN: RAF	06/23/20	
CHECKED: DWG	06/30/20	
DES ENG:		
MFG ENG:		

FULCRUM ACOUSTIC, LLC
670 LINDOOD AVE, WHITINSVILLE, MA 01588 USA

TITLE: Mechanical Spec,
YK-P Yoke Bracket

A SHEET 1 OF 1 SCALE: 1:6

DWG. NO. 820-300-026 REV 3